

## Report Details

Report Location C:\Users\Didattica\Desktop\chim\_fis\_2\2016\1a2\bromobenzene\_10.pdf  
Report Creator user  
Report Date Monday, May 30, 2016 4:26 PM

## Sample Details

Sample Name 10  
Sample Description Sample 018 By ir Date Monday, May 30 2016  
Analyst user  
Creation Date 5/30/2016 4:01:16 PM  
X-Axis Units cm-1  
Y-Axis Units A

## Instrument Details

Instrument Model Spectrum Two  
Instrument Serial Number 100169  
Software Revision NIOS2 Main 00.02.0064 29-November-2013 10:09:27  
Number of Scans 4  
Resolution 1

## Instrument Details (Full)

Instrument Model Spectrum Two  
Instrument Serial Number 100169  
Software Revision NIOS2 Main 00.02.0064 29-November-2013 10:09:27  
Number of Scans 4  
Resolution 1  
Detector MIR TGS  
Source MIR  
Beamsplitter OptKBr  
Apodization Strong  
Spectrum Type Spectrum  
Beam Type Ratio  
Phase correction Background  
Scan Speed 0.2  
IGram Type Single  
Scan Direction Combined  
Zero Crossings 0  
JStop 4.47  
IR-Laser Wavenumber 11750.00  
Manufacturer L1600217  
Part Number L1600217  
Description Sample base plate assy (non RFID)  
Default Scan Range / cm-1 4000 450  
Temperature / °C Not Specified  
Accessory Type Slide Holder  
Slide Holder Option KBr Disc

## Accessory

Manufacturer L1600217  
Part Number L1600217  
Description Sample base plate assy (non RFID)  
Default Scan Range / cm-1 4000 450  
Temperature / °C Not Specified  
Accessory Type Slide Holder  
Slide Holder Option KBr Disc

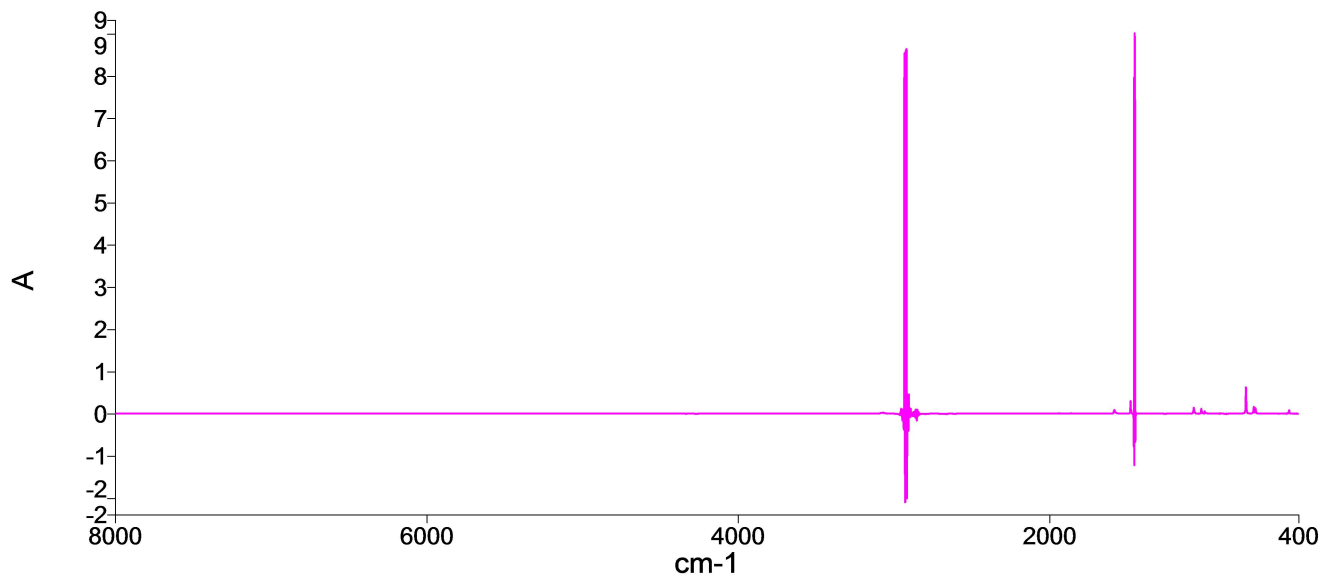
## Quality Checks

Water Vapor	Passed
Carbon Dioxide	Passed
Baseline Low	Passed
Baseline High	Warning
Baseline Slope	Passed
Strong Bands	Warning
Weak Bands	Passed
High Noise	Passed
Fringes	Passed
Vignetting	Passed
Blocked Beam	Passed
Negative Bands	Warning
Zero Transmission	Caution
Stray Light	Passed
Window Cutoff	Passed

**History**

Who	What	When	Parameters	Comment
user	Created as New Dataset	5/30/2016 4:01:16 PM		Sample 018 By ir Date Monday, May 30 2016
user	Atmospheric Correction	5/30/2016 4:01:16 PM		
user	Absorbance	5/30/2016 4:01:16 PM	"Channel:1", "Result.sp"	

**Spectrum**

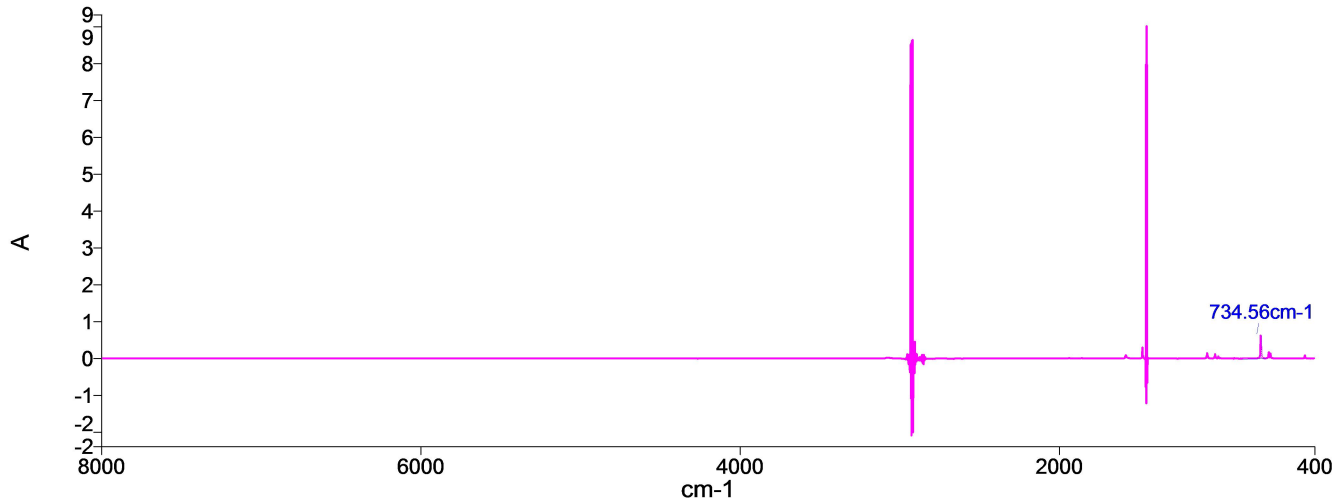


Name	Description
10	Sample 018 By ir Date Monday, May 30 2016

**Summary**

Sample Name	Description	Quality
10	Sample 018 By ir Date Monday, May 30 2016	The Quality Checks give rise to multiple warnings for the sample.

**Peak Table Spectrum**



Name	Description
10	Sample 018 By ir Date Monday, May 30 2016

**Peak Area/Height Results**

Peak	X (cm-1)	Y (A)	Area (A)	Height (A)	Start	End	Base1	Base2
1	734.56	0.6206	3.62	0.6196	860.64	704.92	860.64	704.92

Peak	X (cm-1)	Y (A)	Area (A)	Height (A)	Start	End	Base1	Base2
1	1070.83	0.1396	2.19	0.1436	1257.05	1038.82	1257.05	1038.82