

Report Details

Report Location C:\Users\Didattica\Desktop\chim_fis_2\2016\A3a5\Samples View 1_cella.pdf
Report Creator user
Report Date Monday, June 13, 2016 4:06 PM

Sample Details

Sample Name cella
Sample Description Sample 004 By ir Date Monday, June 13 2016
Analyst user
Creation Date 6/13/2016 4:04:47 PM
X-Axis Units cm-1
Y-Axis Units A

Instrument Details

Instrument Model Spectrum Two
Instrument Serial Number 100169
Software Revision NIOS2 Main 00.02.0079 15-December-2014 11:35:32
Number of Scans 4
Resolution 1

Instrument Details (Full)

Instrument Model Spectrum Two
Instrument Serial Number 100169
Software Revision NIOS2 Main 00.02.0079 15-December-2014 11:35:32
Number of Scans 4
Resolution 1
Detector LiTa03
Source MIR
Beamsplitter OptKBr
Apodization Strong
Spectrum Type Spectrum
Beam Type Ratio
Phase correction Self
Scan Speed 0.2
IGram Type Single
Scan Direction Combined
Zero Crossings 0
JStop 4.47
IR-Laser Wavenumber 11750.00
Manufacturer L1600217
Part Number L1600217
Description Sample base plate assy (non RFID)
Default Scan Range / cm-1 4000 450
Temperature / °C Not Specified
Accessory Type Slide Holder
Slide Holder Option Not Specified

Accessory

Manufacturer L1600217
Part Number L1600217
Description Sample base plate assy (non RFID)
Default Scan Range / cm-1 4000 450
Temperature / °C Not Specified
Accessory Type Slide Holder
Slide Holder Option Not Specified

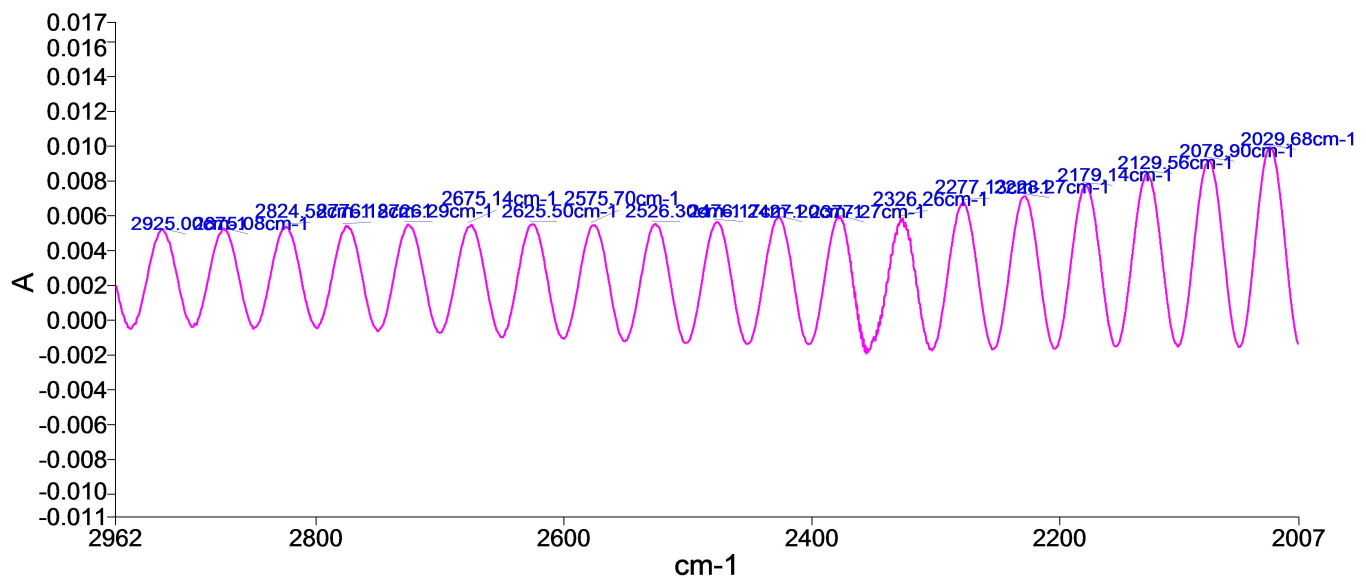
Quality Checks

| | |
|-------------------|---------|
| Water Vapor | Passed |
| Carbon Dioxide | Passed |
| Baseline Low | Passed |
| Baseline High | Caution |
| Baseline Slope | Passed |
| Strong Bands | Passed |
| Weak Bands | Warning |
| High Noise | Passed |
| Fringes | Warning |
| Vignetting | Passed |
| Blocked Beam | Passed |
| Negative Bands | Passed |
| Zero Transmission | Passed |
| Stray Light | Passed |
| Window Cutoff | Passed |

History

| Who | What | When | Parameters | Comment |
|------|------------------------|----------------------|-----------------------------|--------------------------------------------|
| user | Created as New Dataset | 6/13/2016 4:04:47 PM | | Sample 004 By ir Date Monday, June 13 2016 |
| user | Atmospheric Correction | 6/13/2016 4:04:47 PM | | |
| user | Absorbance | 6/13/2016 4:04:47 PM | "Channel:1", "Result.sp" | |

Spectrum



| Name | Description |
|-------|--------------------------------------------|
| cella | Sample 004 By ir Date Monday, June 13 2016 |

Summary

| Sample Name | Description | Quality |
|-------------|--------------------------------------------|-------------------------------------------------------------------|
| cella | Sample 004 By ir Date Monday, June 13 2016 | The Quality Checks give rise to multiple warnings for the sample. |