

## Report Details

Report Location C:\Users\Didattica\Desktop\chim\_fis\_2\2016\4b7\Samples View 1\_cella.pdf  
Report Creator user  
Report Date Monday, June 06, 2016 4:11 PM

## Sample Details

Sample Name cella  
Sample Description Sample 035 By ir Date Monday, June 06 2016  
Analyst user  
Creation Date 6/6/2016 4:08:18 PM  
X-Axis Units cm-1  
Y-Axis Units A

## Instrument Details

Instrument Model Spectrum Two  
Instrument Serial Number 100169  
Software Revision NIOS2 Main 00.02.0064 29-November-2013 10:09:27  
Number of Scans 4  
Resolution 1

## Instrument Details (Full)

Instrument Model Spectrum Two  
Instrument Serial Number 100169  
Software Revision NIOS2 Main 00.02.0064 29-November-2013 10:09:27  
Number of Scans 4  
Resolution 1  
Detector MIR TGS  
Source MIR  
Beamsplitter OptKBr  
Apodization Strong  
Spectrum Type Spectrum  
Beam Type Ratio  
Phase correction Background  
Scan Speed 0.2  
IGram Type Single  
Scan Direction Combined  
Zero Crossings 0  
JStop 4.47  
IR-Laser Wavenumber 11750.00  
Manufacturer L1600217  
Part Number L1600217  
Description Sample base plate assy (non RFID)  
Default Scan Range / cm-1 4000 450  
Temperature / °C Not Specified  
Accessory Type Slide Holder  
Slide Holder Option KBr Disc

## Accessory

Manufacturer L1600217  
Part Number L1600217  
Description Sample base plate assy (non RFID)  
Default Scan Range / cm-1 4000 450  
Temperature / °C Not Specified  
Accessory Type Slide Holder  
Slide Holder Option KBr Disc

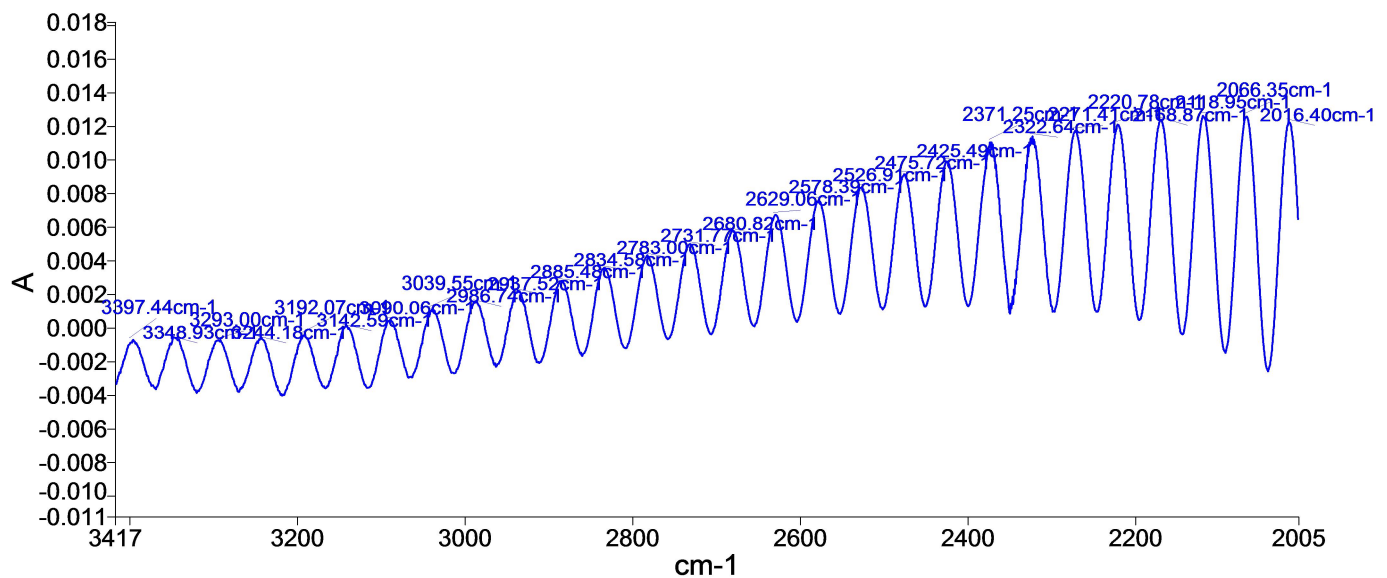
## Quality Checks

Water Vapor	Passed
Carbon Dioxide	Passed
Baseline Low	Passed
Baseline High	Caution
Baseline Slope	Passed
Strong Bands	Passed
Weak Bands	Warning
High Noise	Passed
Fringes	Warning
Vignetting	Passed
Blocked Beam	Passed
Negative Bands	Passed
Zero Transmission	Passed
Stray Light	Passed
Window Cutoff	Passed

### History

Who	What	When	Parameters	Comment
user	Created as New Dataset	6/6/2016 4:08:18 PM		Sample 035 By ir Date Monday, June 06 2016
user	Atmospheric Correction	6/6/2016 4:08:18 PM		
user	Absorbance	6/6/2016 4:08:18 PM	"Channel:1", "Result.sp"	

### Spectrum



Name	Description
— cella	Sample 035 By ir Date Monday, June 06 2016

### Summary

Sample Name	Description	Quality
cella	Sample 035 By ir Date Monday, June 06 2016	The Quality Checks give rise to multiple warnings for the sample.