

Report Details

Report Location C:\Users\Didattica\Desktop\chim_fis_2\2016\b1b2\Samples View 1_cella.pdf
Report Creator user
Report Date Wednesday, June 01, 2016 3:50 PM

Sample Details

Sample Name cella
Sample Description Sample 026 By ir Date Wednesday, June 01 2016
Analyst user
Creation Date 6/1/2016 3:49:20 PM
X-Axis Units cm-1
Y-Axis Units A

Instrument Details

Instrument Model Spectrum Two
Instrument Serial Number 100169
Software Revision NIOS2 Main 00.02.0064 29-November-2013 10:09:27
Number of Scans 4
Resolution 1

Instrument Details (Full)

Instrument Model Spectrum Two
Instrument Serial Number 100169
Software Revision NIOS2 Main 00.02.0064 29-November-2013 10:09:27
Number of Scans 4
Resolution 1
Detector MIR TGS
Source MIR
Beamsplitter OptKBr
Apodization Strong
Spectrum Type Spectrum
Beam Type Ratio
Phase correction Background
Scan Speed 0.2
IGram Type Single
Scan Direction Combined
Zero Crossings 0
JStop 4.47
IR-Laser Wavenumber 11750.00
Manufacturer L1600217
Part Number L1600217
Description Sample base plate assy (non RFID)
Default Scan Range / cm-1 4000 450
Temperature / °C Not Specified
Accessory Type Slide Holder
Slide Holder Option KBr Disc

Accessory

Manufacturer L1600217
Part Number L1600217
Description Sample base plate assy (non RFID)
Default Scan Range / cm-1 4000 450
Temperature / °C Not Specified
Accessory Type Slide Holder
Slide Holder Option KBr Disc

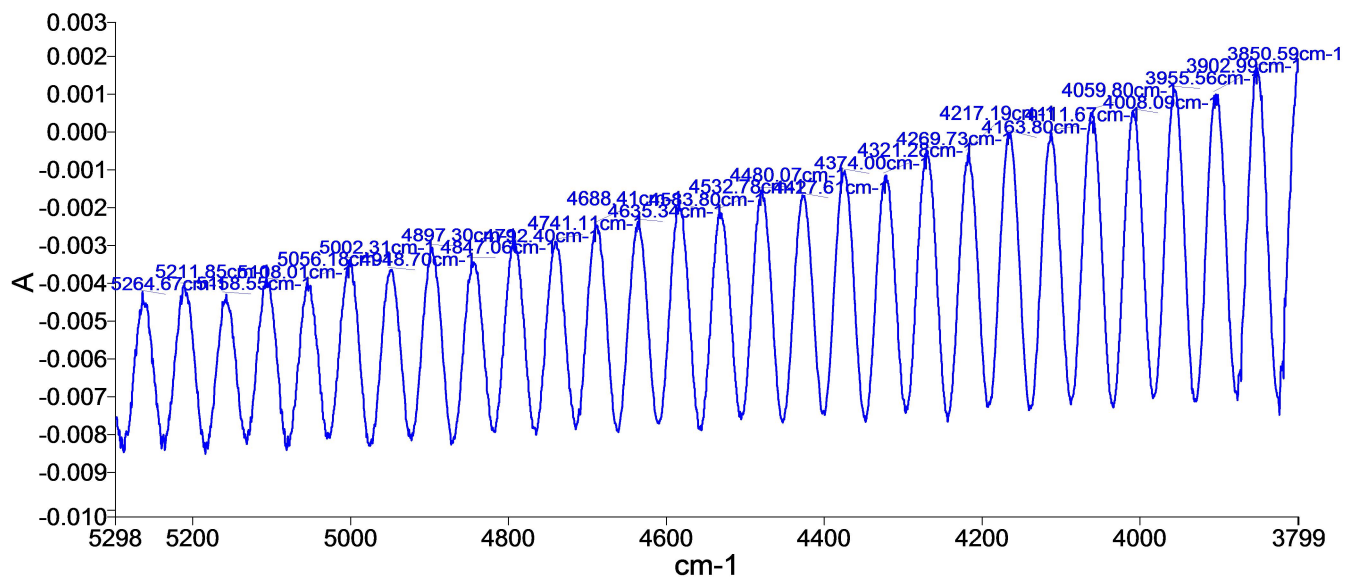
Quality Checks

Water Vapor	Passed
Carbon Dioxide	Passed
Baseline Low	Passed
Baseline High	Passed
Baseline Slope	Passed
Strong Bands	Passed
Weak Bands	Warning
High Noise	Passed
Fringes	Warning
Vignetting	Passed
Blocked Beam	Passed
Negative Bands	Passed
Zero Transmission	Passed
Stray Light	Passed
Window Cutoff	Passed

History

Who	What	When	Parameters	Comment
user	Created as New Dataset	6/1/2016 3:49:20 PM		Sample 026 By ir Date Wednesday, June 01 2016
user	Atmospheric Correction	6/1/2016 3:49:20 PM		
user	Absorbance	6/1/2016 3:49:20 PM	"Channel:1", "Result.sp"	

Spectrum



Name	Description
— cella	Sample 026 By ir Date Wednesday, June 01 2016

Summary

Sample Name	Description	Quality
cella	Sample 026 By ir Date Wednesday, June 01 2016	The Quality Checks give rise to multiple warnings for the sample.