

Report Details

Report Location C:\Users\Didattica\Desktop\chim_fis_2\2016\b3b4\Samples View 1_30c.pdf
Report Creator user
Report Date Wednesday, June 08, 2016 5:42 PM

Sample Details

Sample Name 30c
Sample Description Sample 056 By ir Date Wednesday, June 08 2016
Analyst user
Creation Date 6/8/2016 5:21:07 PM
X-Axis Units cm-1
Y-Axis Units A

Instrument Details

Instrument Model Spectrum Two
Instrument Serial Number 100169
Software Revision NIOS2 Main 00.02.0064 29-November-2013 10:09:27
Number of Scans 4
Resolution 1

Instrument Details (Full)

Instrument Model Spectrum Two
Instrument Serial Number 100169
Software Revision NIOS2 Main 00.02.0064 29-November-2013 10:09:27
Number of Scans 4
Resolution 1
Detector MIR TGS
Source MIR
Beamsplitter OptKBr
Apodization Strong
Spectrum Type Spectrum
Beam Type Ratio
Phase correction Background
Scan Speed 0.2
IGram Type Single
Scan Direction Combined
Zero Crossings 0
JStop 4.47
IR-Laser Wavenumber 11750.00
Manufacturer L1600217
Part Number L1600217
Description Sample base plate assy (non RFID)
Default Scan Range / cm-1 4000 450
Temperature / °C Not Specified
Accessory Type Slide Holder
Slide Holder Option KBr Disc

Accessory

Manufacturer L1600217
Part Number L1600217
Description Sample base plate assy (non RFID)
Default Scan Range / cm-1 4000 450
Temperature / °C Not Specified
Accessory Type Slide Holder
Slide Holder Option KBr Disc

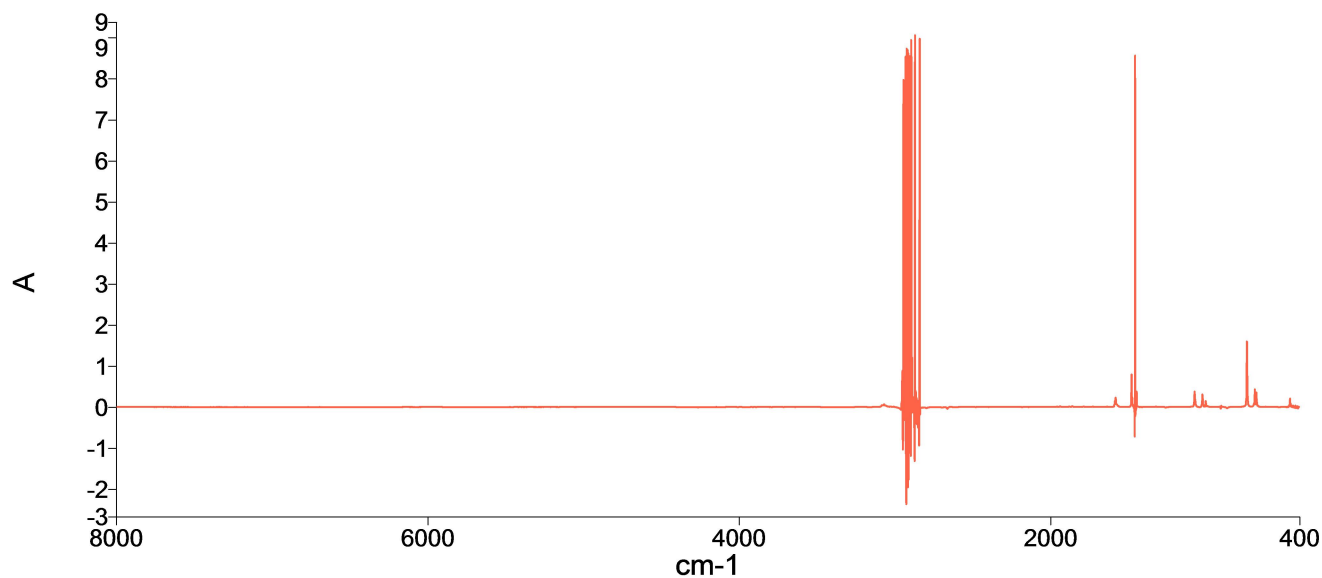
Quality Checks

| | |
|-------------------|---------|
| Water Vapor | Passed |
| Carbon Dioxide | Passed |
| Baseline Low | Passed |
| Baseline High | Warning |
| Baseline Slope | Passed |
| Strong Bands | Warning |
| Weak Bands | Passed |
| High Noise | Passed |
| Fringes | Passed |
| Vignetting | Passed |
| Blocked Beam | Passed |
| Negative Bands | Warning |
| Zero Transmission | Caution |
| Stray Light | Passed |
| Window Cutoff | Passed |

History

| Who | What | When | Parameters | Comment |
|------|------------------------|---------------------|-----------------------------|---|
| user | Created as New Dataset | 6/8/2016 5:21:07 PM | | Sample 056 By ir Date Wednesday, June 08 2016 |
| user | Atmospheric Correction | 6/8/2016 5:21:07 PM | | |
| user | Absorbance | 6/8/2016 5:21:07 PM | "Channel:1", "Result.sp" | |

Spectrum

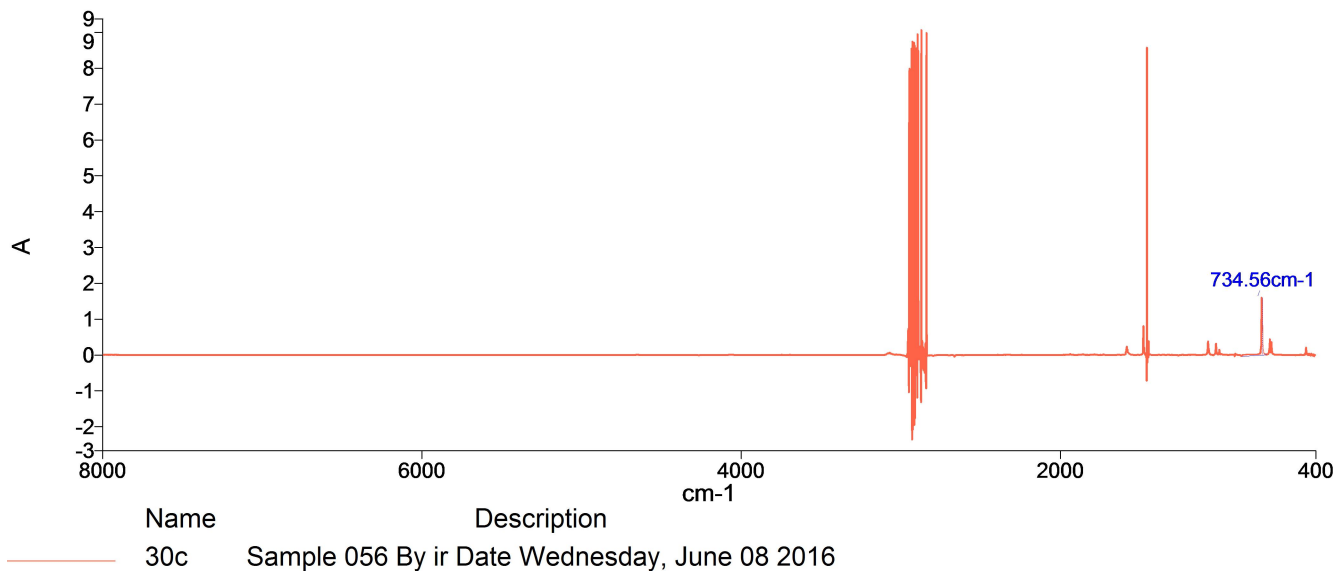


| Name | Description |
|------|---|
| 30c | Sample 056 By ir Date Wednesday, June 08 2016 |

Summary

| Sample Name | Description | Quality |
|-------------|---|---|
| 30c | Sample 056 By ir Date Wednesday, June 08 2016 | The Quality Checks give rise to multiple warnings for the sample. |

Peak Table Spectrum



Peak Area/Height Results

| Peak | X (cm-1) | Y (A) | Area (A) | Height (A) | Start | End | Base1 | Base2 |
|------|----------|--------|----------|------------|--------|--------|--------|--------|
| 1 | 734.56 | 1.5994 | 9.81 | 1.5964 | 863.17 | 708.44 | 863.01 | 708.52 |

| Peak | X (cm-1) | Y (A) | Area (A) | Height (A) | Start | End | Base1 | Base2 |
|------|----------|--------|----------|------------|---------|---------|---------|--------|
| 1 | 1070.78 | 0.3735 | 3.56 | 0.3808 | 1180.82 | 1038.95 | 1180.82 | 1039.2 |