

## Report Details

Report Location C:\Users\Didattica\Desktop\chim\_fis\_2\2016\b3b4\Samples View 1\_cella.pdf  
Report Creator user  
Report Date Wednesday, June 08, 2016 4:16 PM

## Sample Details

Sample Name cella  
Sample Description Sample 046 By ir Date Wednesday, June 08 2016  
Analyst user  
Creation Date 6/8/2016 4:15:38 PM  
X-Axis Units cm-1  
Y-Axis Units A

## Instrument Details

Instrument Model Spectrum Two  
Instrument Serial Number 100169  
Software Revision NIOS2 Main 00.02.0064 29-November-2013 10:09:27  
Number of Scans 4  
Resolution 1

## Instrument Details (Full)

Instrument Model Spectrum Two  
Instrument Serial Number 100169  
Software Revision NIOS2 Main 00.02.0064 29-November-2013 10:09:27  
Number of Scans 4  
Resolution 1  
Detector MIR TGS  
Source MIR  
Beamsplitter OptKBr  
Apodization Strong  
Spectrum Type Spectrum  
Beam Type Ratio  
Phase correction Background  
Scan Speed 0.2  
IGram Type Single  
Scan Direction Combined  
Zero Crossings 0  
JStop 4.47  
IR-Laser Wavenumber 11750.00  
Manufacturer L1600217  
Part Number L1600217  
Description Sample base plate assy (non RFID)  
Default Scan Range / cm-1 4000 450  
Temperature / °C Not Specified  
Accessory Type Slide Holder  
Slide Holder Option KBr Disc

## Accessory

Manufacturer L1600217  
Part Number L1600217  
Description Sample base plate assy (non RFID)  
Default Scan Range / cm-1 4000 450  
Temperature / °C Not Specified  
Accessory Type Slide Holder  
Slide Holder Option KBr Disc

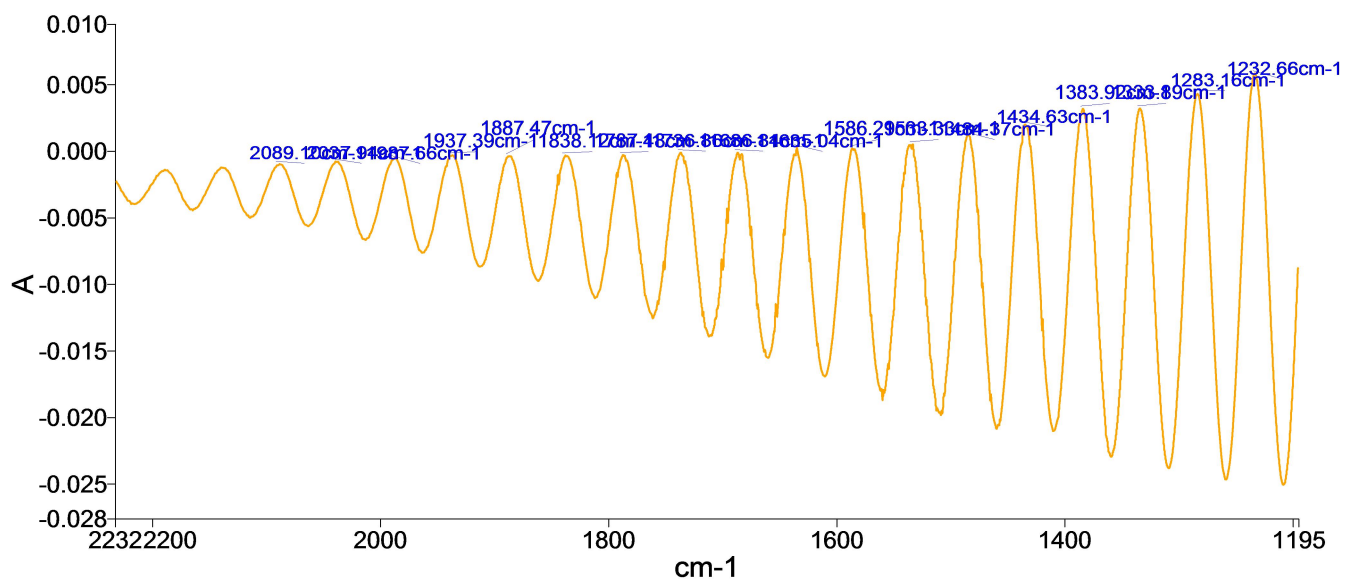
## Quality Checks

|                   |         |
|-------------------|---------|
| Water Vapor       | Passed  |
| Carbon Dioxide    | Passed  |
| Baseline Low      | Passed  |
| Baseline High     | Caution |
| Baseline Slope    | Passed  |
| Strong Bands      | Passed  |
| Weak Bands        | Warning |
| High Noise        | Passed  |
| Fringes           | Warning |
| Vignetting        | Passed  |
| Blocked Beam      | Passed  |
| Negative Bands    | Passed  |
| Zero Transmission | Passed  |
| Stray Light       | Passed  |
| Window Cutoff     | Passed  |

### History

| Who  | What                   | When                | Parameters                  | Comment                                       |
|------|------------------------|---------------------|-----------------------------|---|
| user | Created as New Dataset | 6/8/2016 4:15:38 PM |                             | Sample 046 By ir Date Wednesday, June 08 2016 |
| user | Atmospheric Correction | 6/8/2016 4:15:38 PM |                             |   |
| user | Absorbance             | 6/8/2016 4:15:38 PM | "Channel:1",<br>"Result.sp" |   |

### Spectrum



| Name  | Description                                   |
|-------|---|
| cella | Sample 046 By ir Date Wednesday, June 08 2016 |

### Summary

| Sample Name | Description                                   | Quality   |
|-------------|---|---|
| cella       | Sample 046 By ir Date Wednesday, June 08 2016 | The Quality Checks give rise to multiple warnings for the sample. |