

Report Details

Report Location C:\Users\Didattica\Desktop\chim_fis_2\2016\b5b6\Samples View 1.pdf
Report Creator user
Report Date Wednesday, June 15, 2016 3:53 PM

Sample Details

ir 11

Sample Name C:\Users\Didattica\Desktop\chim_fis_2\2016\b5b6\ir 11.sp
Sample Description Sample 011 By ir Date Wednesday, June 15 2016
Analyst user
Creation Date 6/15/2016 3:51:35 PM
X-Axis Units cm-1
Y-Axis Units A

Instrument Details

ir 11

Instrument Model Spectrum Two
Instrument Serial Number 100169
Software Revision NIOS2 Main 00.02.0079 15-December-2014 11:35:32
Number of Scans 4
Resolution 1

Instrument Details (Full)

ir 11

Instrument Model Spectrum Two
Instrument Serial Number 100169
Software Revision NIOS2 Main 00.02.0079 15-December-2014 11:35:32
Number of Scans 4
Resolution 1
Detector LiTa03
Source MIR
Beamsplitter OptKBr
Apodization Strong
Spectrum Type Spectrum
Beam Type Ratio
Phase correction Self
Scan Speed 0.2
IGram Type Single
Scan Direction Combined
Zero Crossings 0
JStop 4.47
IR-Laser Wavenumber 11750.00

Accessory

ir 11

Manufacturer L1600217
Part Number L1600217
Description Sample base plate assy (non RFID)
Default Scan Range / cm-1 4000 450
Temperature / °C Not Specified
Accessory Type Slide Holder
Slide Holder Option Not Specified

Quality Checks

ir 11

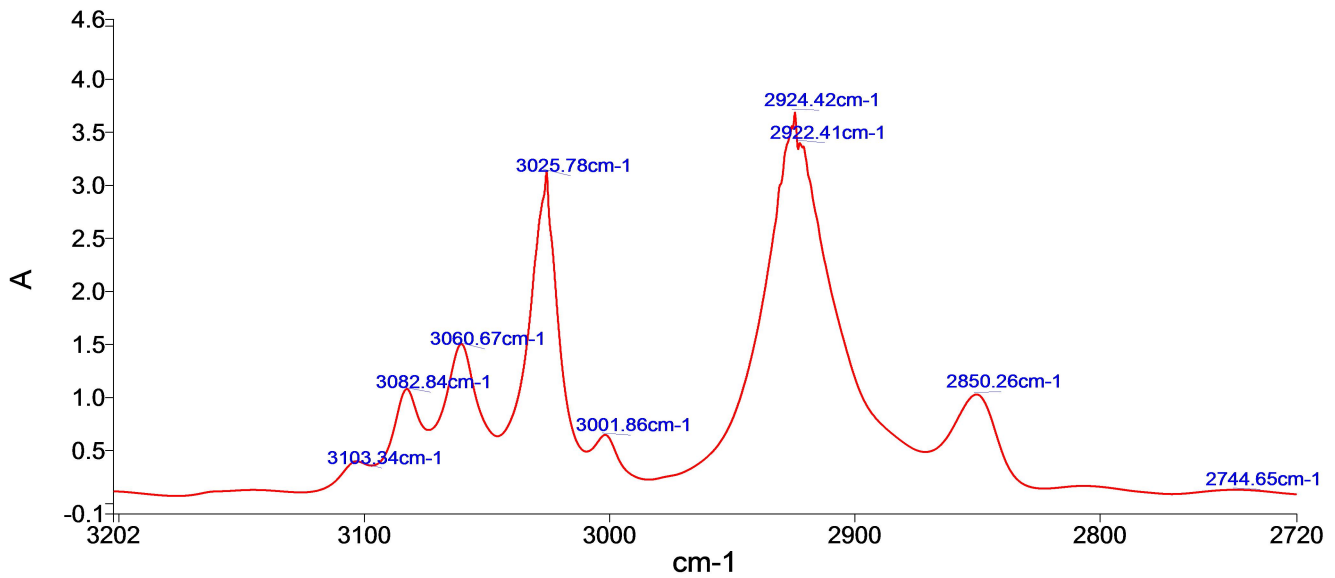
Water Vapor	Passed
Carbon Dioxide	Passed
Baseline Low	Passed
Baseline High	Passed
Baseline Slope	Passed
Strong Bands	Warning
Weak Bands	Passed
High Noise	Passed
Fringes	Warning
Vignetting	Passed
Blocked Beam	Passed
Negative Bands	Passed
Zero Transmission	Passed
Stray Light	Passed
Window Cutoff	Passed

History

ir 11

Who	What	When	Parameters	Comment
user	Created as New Dataset	6/15/2016 3:51:35 PM		Sample 011 By ir Date Wednesday, June 15 2016
user	Atmospheric Correction	6/15/2016 3:51:35 PM		
user	Absorbance	6/15/2016 3:51:36 PM	"Channel:1", "Result.sp"	

Spectrum



Name	Description
ir 11	Sample 011 By ir Date Wednesday, June 15 2016

Summary

Sample Name	Description	Quality
ir 11	Sample 011 By ir Date Wednesday, June 15 2016	The Quality Checks give rise to multiple warnings for the sample.