

Report Details

Report Location C:\Users\Didattica\Desktop\chim_fis_2\2016\b5b6\bromobenzene_10.pdf
Report Creator user
Report Date Wednesday, June 15, 2016 4:43 PM

Sample Details

Sample Name 10
Sample Description Sample 013 By ir Date Wednesday, June 15 2016
Analyst user
Creation Date 6/15/2016 4:16:43 PM
X-Axis Units cm-1
Y-Axis Units A

Instrument Details

Instrument Model Spectrum Two
Instrument Serial Number 100169
Software Revision NIOS2 Main 00.02.0079 15-December-2014 11:35:32
Number of Scans 4
Resolution 1

Instrument Details (Full)

Instrument Model Spectrum Two
Instrument Serial Number 100169
Software Revision NIOS2 Main 00.02.0079 15-December-2014 11:35:32
Number of Scans 4
Resolution 1
Detector LiTa03
Source MIR
Beamsplitter OptKBr
Apodization Strong
Spectrum Type Spectrum
Beam Type Ratio
Phase correction Self
Scan Speed 0.2
IGram Type Single
Scan Direction Combined
Zero Crossings 0
JStop 4.47
IR-Laser Wavenumber 11750.00
Manufacturer L1600217
Part Number L1600217
Description Sample base plate assy (non RFID)
Default Scan Range / cm-1 4000 450
Temperature / °C Not Specified
Accessory Type Slide Holder
Slide Holder Option Not Specified

Accessory

Manufacturer L1600217
Part Number L1600217
Description Sample base plate assy (non RFID)
Default Scan Range / cm-1 4000 450
Temperature / °C Not Specified
Accessory Type Slide Holder
Slide Holder Option Not Specified

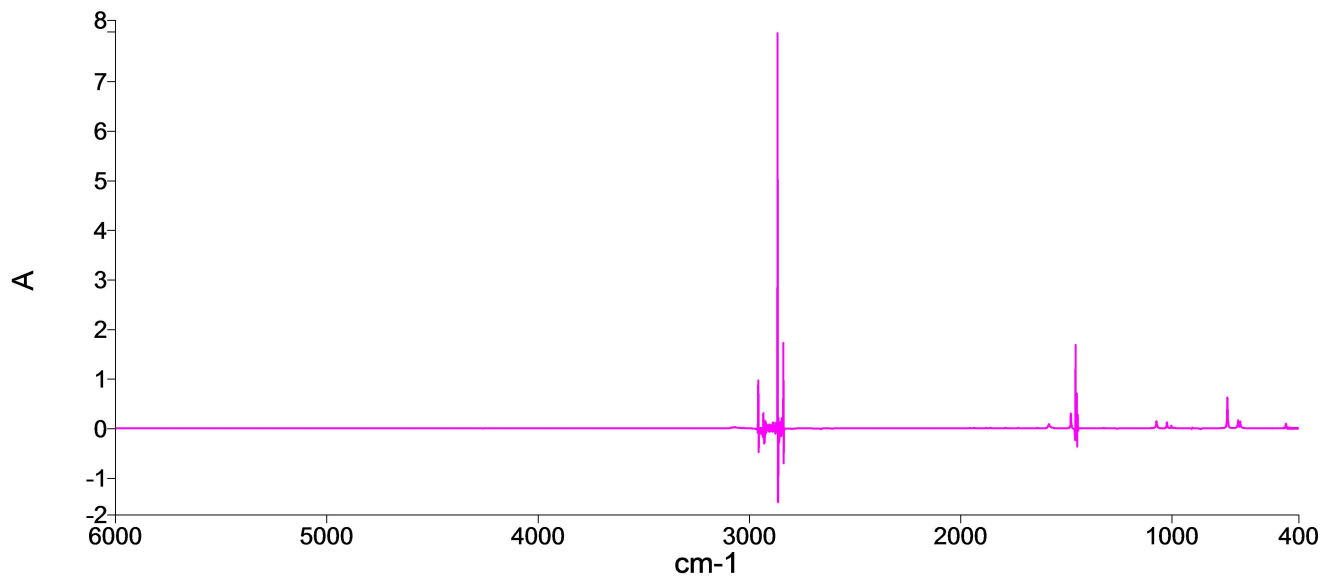
Quality Checks

Water Vapor	Passed
Carbon Dioxide	Passed
Baseline Low	Passed
Baseline High	Warning
Baseline Slope	Passed
Strong Bands	Warning
Weak Bands	Passed
High Noise	Passed
Fringes	Passed
Vignetting	Passed
Blocked Beam	Passed
Negative Bands	Warning
Zero Transmission	Caution
Stray Light	Passed
Window Cutoff	Passed

History

Who	What	When	Parameters	Comment
user	Created as New Dataset	6/15/2016 4:16:43 PM		Sample 013 By ir Date Wednesday, June 15 2016
user	Atmospheric Correction	6/15/2016 4:16:43 PM		
user	Absorbance	6/15/2016 4:16:44 PM	"Channel:1", "Result.sp"	

Spectrum

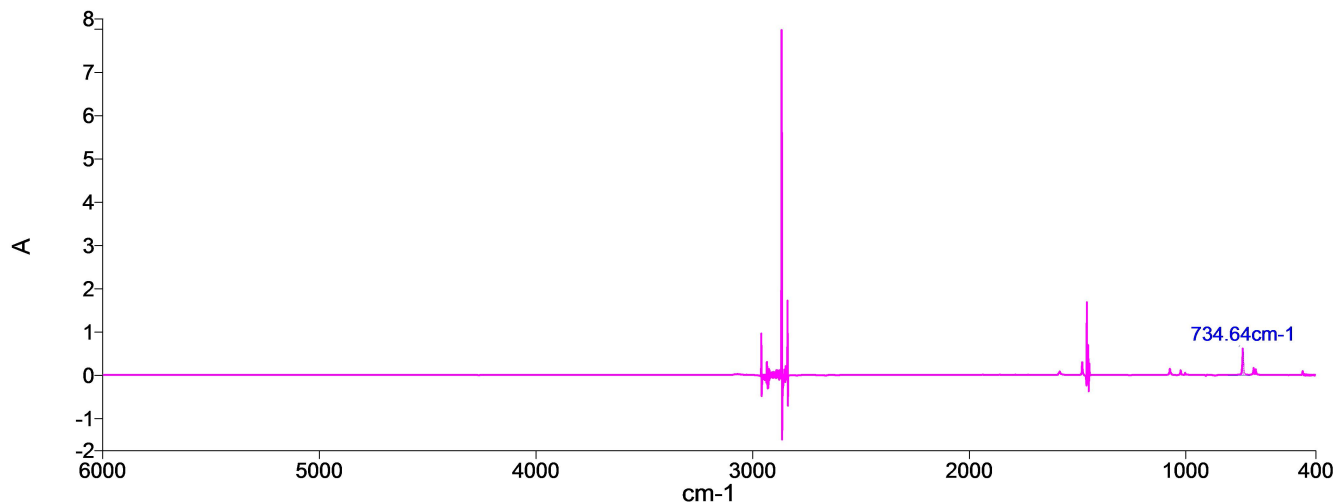


Name	Description
10	Sample 013 By ir Date Wednesday, June 15 2016

Summary

Sample Name	Description	Quality
10	Sample 013 By ir Date Wednesday, June 15 2016	The Quality Checks give rise to multiple warnings for the sample.

Peak Table Spectrum



Name Description
 10 Sample 013 By ir Date Wednesday, June 15 2016

Peak Area/Height Results

Peak	X (cm-1)	Y (A)	Area (A)	Height (A)	Start	End	Base1	Base2
1	734.64	0.6192	2.93	0.6152	806.3	703.98	806.5	703.98

Peak	X (cm-1)	Y (A)	Area (A)	Height (A)	Start	End	Base1	Base2
1	1070.95	0.1406	1.3	0.1425	1138.04	1039.23	1137.21	1039.23