

Report Details

Report Location C:\Users\Didattica\Desktop\chim_fis_2\2016\b5b6\bromobenzene_20.pdf
Report Creator user
Report Date Wednesday, June 15, 2016 4:43 PM

Sample Details

Sample Name 20
Sample Description Sample 015 By ir Date Wednesday, June 15 2016
Analyst user
Creation Date 6/15/2016 4:28:15 PM
X-Axis Units cm-1
Y-Axis Units A

Instrument Details

Instrument Model Spectrum Two
Instrument Serial Number 100169
Software Revision NIOS2 Main 00.02.0079 15-December-2014 11:35:32
Number of Scans 4
Resolution 1

Instrument Details (Full)

Instrument Model Spectrum Two
Instrument Serial Number 100169
Software Revision NIOS2 Main 00.02.0079 15-December-2014 11:35:32
Number of Scans 4
Resolution 1
Detector LiTa03
Source MIR
Beamsplitter OptKBr
Apodization Strong
Spectrum Type Spectrum
Beam Type Ratio
Phase correction Self
Scan Speed 0.2
IGram Type Single
Scan Direction Combined
Zero Crossings 0
JStop 4.47
IR-Laser Wavenumber 11750.00
Manufacturer L1600217
Part Number L1600217
Description Sample base plate assy (non RFID)
Default Scan Range / cm-1 4000 450
Temperature / °C Not Specified
Accessory Type Slide Holder
Slide Holder Option Not Specified

Accessory

Manufacturer L1600217
Part Number L1600217
Description Sample base plate assy (non RFID)
Default Scan Range / cm-1 4000 450
Temperature / °C Not Specified
Accessory Type Slide Holder
Slide Holder Option Not Specified

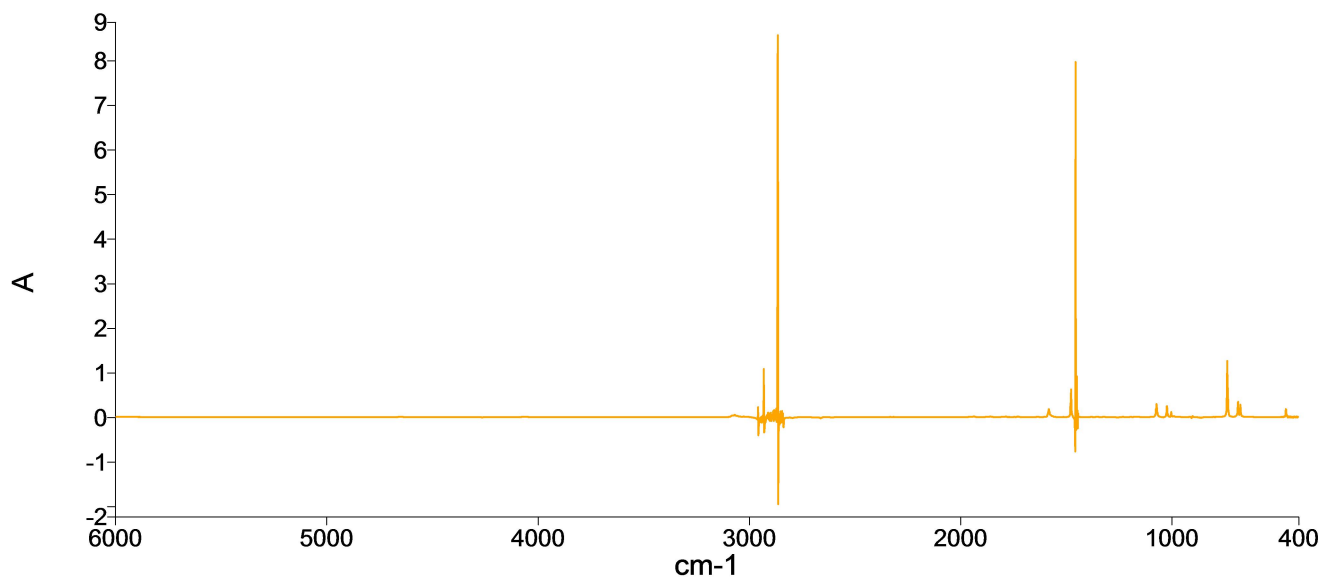
Quality Checks

| | |
|-------------------|---------|
| Water Vapor | Passed |
| Carbon Dioxide | Passed |
| Baseline Low | Passed |
| Baseline High | Warning |
| Baseline Slope | Passed |
| Strong Bands | Warning |
| Weak Bands | Passed |
| High Noise | Passed |
| Fringes | Passed |
| Vignetting | Passed |
| Blocked Beam | Passed |
| Negative Bands | Warning |
| Zero Transmission | Caution |
| Stray Light | Passed |
| Window Cutoff | Passed |

History

| Who | What | When | Parameters | Comment |
|------|------------------------|----------------------|--------------------------|---|
| user | Created as New Dataset | 6/15/2016 4:28:15 PM | | Sample 015 By ir Date Wednesday, June 15 2016 |
| user | Atmospheric Correction | 6/15/2016 4:28:15 PM | | |
| user | Absorbance | 6/15/2016 4:28:15 PM | "Channel:1", "Result.sp" | |

Spectrum

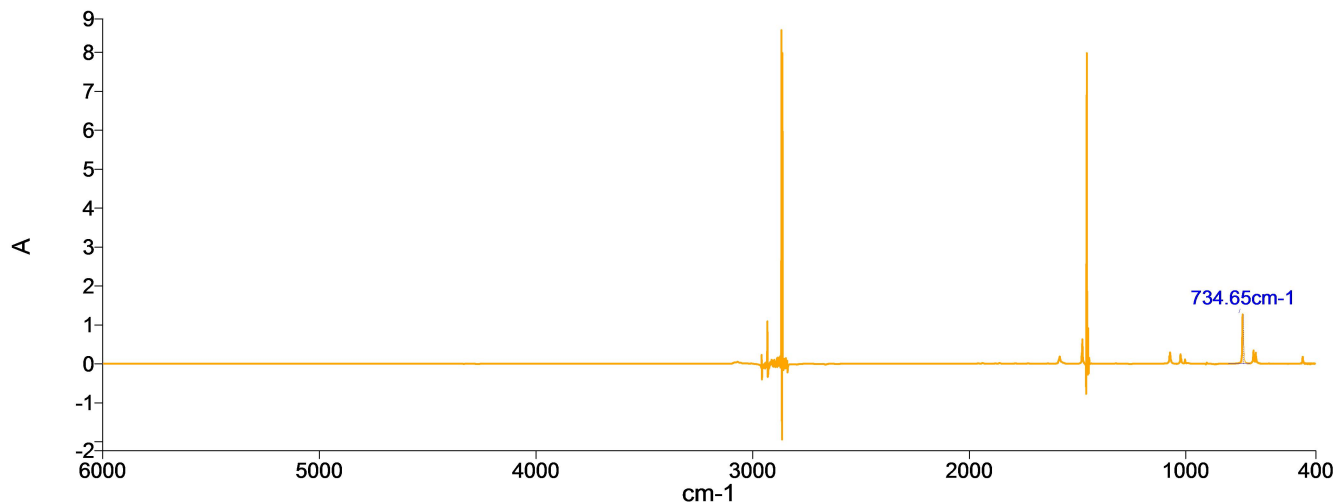


| Name | Description |
|------|---|
| 20 | Sample 015 By ir Date Wednesday, June 15 2016 |

Summary

| Sample Name | Description | Quality |
|-------------|---|---|
| 20 | Sample 015 By ir Date Wednesday, June 15 2016 | The Quality Checks give rise to multiple warnings for the sample. |

Peak Table Spectrum



Name Description
 ——— 20 Sample 015 By ir Date Wednesday, June 15 2016

Peak Area/Height Results

| Peak | X (cm-1) | Y (A) | Area (A) | Height (A) | Start | End | Base1 | Base2 |
|------|----------|--------|----------|------------|-------|--------|--------|--------|
| 1 | 734.65 | 1.2676 | 6.05 | 1.2595 | 806.3 | 703.98 | 805.69 | 704.23 |

| Peak | X (cm-1) | Y (A) | Area (A) | Height (A) | Start | End | Base1 | Base2 |
|------|----------|--------|----------|------------|---------|---------|---------|---------|
| 1 | 1070.93 | 0.2943 | 2.49 | 0.2955 | 1138.04 | 1039.23 | 1137.03 | 1039.24 |