

Report Details

Report Location C:\Users\Didattica\Desktop\chim_fis_2\2016\c5c7\bromobenzene.pdf
Report Creator user
Report Date Thursday, June 16, 2016 10:55 AM

Sample Details

10

Sample Name C:\Users\Didattica\Desktop\chim_fis_2\2016\c5c7\10.sp
Sample Description Sample 021 By ir Date Thursday, June 16 2016
Analyst user
Creation Date 6/16/2016 10:35:31 AM
X-Axis Units cm-1
Y-Axis Units A

15

Sample Name C:\Users\Didattica\Desktop\chim_fis_2\2016\c5c7\15.sp
Sample Description Sample 022 By ir Date Thursday, June 16 2016
Analyst user
Creation Date 6/16/2016 10:38:40 AM
X-Axis Units cm-1
Y-Axis Units A

20

Sample Name C:\Users\Didattica\Desktop\chim_fis_2\2016\c5c7\20.sp
Sample Description Sample 023 By ir Date Thursday, June 16 2016
Analyst user
Creation Date 6/16/2016 10:42:53 AM
X-Axis Units cm-1
Y-Axis Units A

25

Sample Name C:\Users\Didattica\Desktop\chim_fis_2\2016\c5c7\25.sp
Sample Description Sample 024 By ir Date Thursday, June 16 2016
Analyst user
Creation Date 6/16/2016 10:46:05 AM
X-Axis Units cm-1
Y-Axis Units A

30

Sample Name C:\Users\Didattica\Desktop\chim_fis_2\2016\c5c7\30.sp
Sample Description Sample 025 By ir Date Thursday, June 16 2016
Analyst user
Creation Date 6/16/2016 10:50:05 AM
X-Axis Units cm-1
Y-Axis Units A

Instrument Details

10

Instrument Model Spectrum Two
Instrument Serial Number 100169
Software Revision NIOS2 Main 00.02.0079 15-December-2014 11:35:32
Number of Scans 4
Resolution 1

15

Instrument Model Spectrum Two

Instrument Serial Number 100169
Software Revision NIOS2 Main 00.02.0079 15-December-2014 11:35:32
Number of Scans 4
Resolution 1

20

Instrument Model Spectrum Two
Instrument Serial Number 100169
Software Revision NIOS2 Main 00.02.0079 15-December-2014 11:35:32
Number of Scans 4
Resolution 1

25

Instrument Model Spectrum Two
Instrument Serial Number 100169
Software Revision NIOS2 Main 00.02.0079 15-December-2014 11:35:32
Number of Scans 4
Resolution 1

30

Instrument Model Spectrum Two
Instrument Serial Number 100169
Software Revision NIOS2 Main 00.02.0079 15-December-2014 11:35:32
Number of Scans 4
Resolution 1

Instrument Details (Full)

10

Instrument Model Spectrum Two
Instrument Serial Number 100169
Software Revision NIOS2 Main 00.02.0079 15-December-2014 11:35:32
Number of Scans 4
Resolution 1
Detector LiTa03
Source MIR
Beamsplitter OptKBr
Apodization Strong
Spectrum Type Spectrum
Beam Type Ratio
Phase correction Self
Scan Speed 0.2
IGram Type Single
Scan Direction Combined
Zero Crossings 0
JStop 4.47
IR-Laser Wavenumber 11750.00
Manufacturer L1600217
Part Number L1600217
Description Sample base plate assy (non RFID)
Default Scan Range / cm-1 4000 450
Temperature / °C Not Specified
Accessory Type Slide Holder
Slide Holder Option Not Specified

15

Instrument Model Spectrum Two

Instrument Serial Number	100169
Software Revision	NIOS2 Main 00.02.0079 15-December-2014 11:35:32
Number of Scans	4
Resolution	1
Detector	LiTa03
Source	MIR
Beamsplitter	OptKBr
Apodization	Strong
Spectrum Type	Spectrum
Beam Type	Ratio
Phase correction	Self
Scan Speed	0.2
IGram Type	Single
Scan Direction	Combined
Zero Crossings	0
JStop	4.47
IR-Laser Wavenumber	11750.00
Manufacturer	L1600217
Part Number	L1600217
Description	Sample base plate assy (non RFID)
Default Scan Range / cm-1	4000 450
Temperature / °C	Not Specified
Accessory Type	Slide Holder
Slide Holder Option	Not Specified

20

Instrument Model	Spectrum Two
Instrument Serial Number	100169
Software Revision	NIOS2 Main 00.02.0079 15-December-2014 11:35:32
Number of Scans	4
Resolution	1
Detector	LiTa03
Source	MIR
Beamsplitter	OptKBr
Apodization	Strong
Spectrum Type	Spectrum
Beam Type	Ratio
Phase correction	Self
Scan Speed	0.2
IGram Type	Single
Scan Direction	Combined
Zero Crossings	0
JStop	4.47
IR-Laser Wavenumber	11750.00
Manufacturer	L1600217
Part Number	L1600217
Description	Sample base plate assy (non RFID)
Default Scan Range / cm-1	4000 450
Temperature / °C	Not Specified
Accessory Type	Slide Holder
Slide Holder Option	Not Specified

25

Instrument Model	Spectrum Two
Instrument Serial Number	100169

Software Revision	NIOS2 Main 00.02.0079 15-December-2014 11:35:32
Number of Scans	4
Resolution	1
Detector	LiTa03
Source	MIR
Beamsplitter	OptKBr
Apodization	Strong
Spectrum Type	Spectrum
Beam Type	Ratio
Phase correction	Self
Scan Speed	0.2
IGram Type	Single
Scan Direction	Combined
Zero Crossings	0
JStop	4.47
IR-Laser Wavenumber	11750.00
Manufacturer	L1600217
Part Number	L1600217
Description	Sample base plate assy (non RFID)
Default Scan Range / cm-1	4000 450
Temperature / °C	Not Specified
Accessory Type	Slide Holder
Slide Holder Option	Not Specified

30

Instrument Model	Spectrum Two
Instrument Serial Number	100169
Software Revision	NIOS2 Main 00.02.0079 15-December-2014 11:35:32
Number of Scans	4
Resolution	1
Detector	LiTa03
Source	MIR
Beamsplitter	OptKBr
Apodization	Strong
Spectrum Type	Spectrum
Beam Type	Ratio
Phase correction	Self
Scan Speed	0.2
IGram Type	Single
Scan Direction	Combined
Zero Crossings	0
JStop	4.47
IR-Laser Wavenumber	11750.00
Manufacturer	L1600217
Part Number	L1600217
Description	Sample base plate assy (non RFID)
Default Scan Range / cm-1	4000 450
Temperature / °C	Not Specified
Accessory Type	Slide Holder
Slide Holder Option	Not Specified

Accessory

10

Manufacturer	L1600217
--------------	----------

Part Number	L1600217
Description	Sample base plate assy (non RFID)
Default Scan Range / cm-1	4000 450
Temperature / °C	Not Specified
Accessory Type	Slide Holder
Slide Holder Option	Not Specified

15

Manufacturer	L1600217
Part Number	L1600217
Description	Sample base plate assy (non RFID)
Default Scan Range / cm-1	4000 450
Temperature / °C	Not Specified
Accessory Type	Slide Holder
Slide Holder Option	Not Specified

20

Manufacturer	L1600217
Part Number	L1600217
Description	Sample base plate assy (non RFID)
Default Scan Range / cm-1	4000 450
Temperature / °C	Not Specified
Accessory Type	Slide Holder
Slide Holder Option	Not Specified

25

Manufacturer	L1600217
Part Number	L1600217
Description	Sample base plate assy (non RFID)
Default Scan Range / cm-1	4000 450
Temperature / °C	Not Specified
Accessory Type	Slide Holder
Slide Holder Option	Not Specified

30

Manufacturer	L1600217
Part Number	L1600217
Description	Sample base plate assy (non RFID)
Default Scan Range / cm-1	4000 450
Temperature / °C	Not Specified
Accessory Type	Slide Holder
Slide Holder Option	Not Specified

Quality Checks

10

Water Vapor	Passed
Carbon Dioxide	Passed
Baseline Low	Passed
Baseline High	Warning
Baseline Slope	Passed
Strong Bands	Warning
Weak Bands	Passed
High Noise	Passed
Fringes	Passed
Vignetting	Passed
Blocked Beam	Passed

Negative Bands	Warning
Zero Transmission	Caution
Stray Light	Passed
Window Cutoff	Passed

15

Water Vapor	Passed
Carbon Dioxide	Passed
Baseline Low	Passed
Baseline High	Warning
Baseline Slope	Passed
Strong Bands	Warning
Weak Bands	Passed
High Noise	Passed
Fringes	Passed
Vignetting	Passed
Blocked Beam	Passed
Negative Bands	Warning
Zero Transmission	Caution
Stray Light	Passed
Window Cutoff	Passed

20

Water Vapor	Passed
Carbon Dioxide	Passed
Baseline Low	Passed
Baseline High	Warning
Baseline Slope	Passed
Strong Bands	Warning
Weak Bands	Passed
High Noise	Passed
Fringes	Passed
Vignetting	Passed
Blocked Beam	Passed
Negative Bands	Warning
Zero Transmission	Caution
Stray Light	Passed
Window Cutoff	Passed

25

Water Vapor	Passed
Carbon Dioxide	Passed
Baseline Low	Passed
Baseline High	Warning
Baseline Slope	Passed
Strong Bands	Warning
Weak Bands	Passed
High Noise	Passed
Fringes	Passed
Vignetting	Passed
Blocked Beam	Passed
Negative Bands	Warning
Zero Transmission	Caution
Stray Light	Passed
Window Cutoff	Passed

30

Water Vapor	Passed
Carbon Dioxide	Passed
Baseline Low	Passed
Baseline High	Warning
Baseline Slope	Passed
Strong Bands	Warning
Weak Bands	Passed
High Noise	Passed
Fringes	Passed
Vignetting	Passed
Blocked Beam	Passed
Negative Bands	Warning
Zero Transmission	Caution
Stray Light	Passed
Window Cutoff	Passed

History

10

Who	What	When	Parameters	Comment
user	Created as New Dataset	6/16/2016 10:35:31 AM		Sample 021 By ir Date Thursday, June 16 2016
user	Atmospheric Correction	6/16/2016 10:35:31 AM		
user	Absorbance	6/16/2016 10:35:31 AM	"Channel:1", "Result.sp"	

15

Who	What	When	Parameters	Comment
user	Created as New Dataset	6/16/2016 10:38:40 AM		Sample 022 By ir Date Thursday, June 16 2016
user	Atmospheric Correction	6/16/2016 10:38:40 AM		
user	Absorbance	6/16/2016 10:38:40 AM	"Channel:1", "Result.sp"	

20

Who	What	When	Parameters	Comment
user	Created as New Dataset	6/16/2016 10:42:53 AM		Sample 023 By ir Date Thursday, June 16 2016
user	Atmospheric Correction	6/16/2016 10:42:53 AM		
user	Absorbance	6/16/2016 10:42:53 AM	"Channel:1", "Result.sp"	

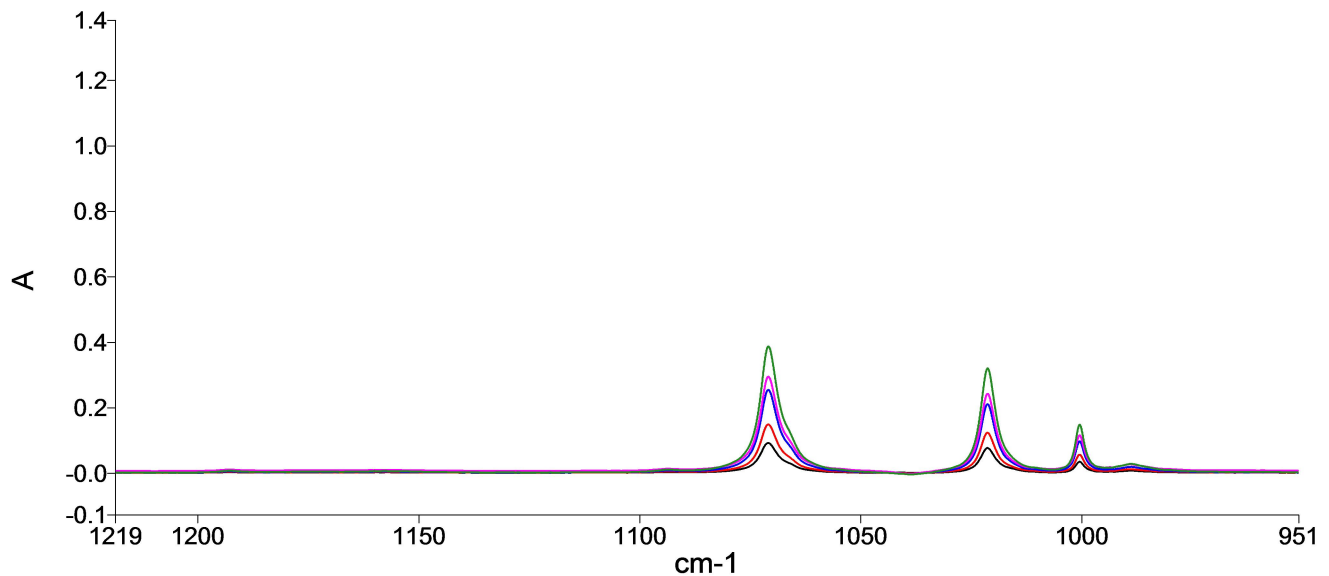
25

Who	What	When	Parameters	Comment
user	Created as New Dataset	6/16/2016 10:46:05 AM		Sample 024 By ir Date Thursday, June 16 2016
user	Atmospheric Correction	6/16/2016 10:46:05 AM		
user	Absorbance	6/16/2016 10:46:05 AM	"Channel:1", "Result.sp"	

30

Who	What	When	Parameters	Comment
user	Created as New Dataset	6/16/2016 10:50:05 AM		Sample 025 By ir Date Thursday, June 16 2016
user	Atmospheric Correction	6/16/2016 10:50:05 AM		
user	Absorbance	6/16/2016 10:50:05 AM	"Channel:1", "Result.sp"	

Spectrum

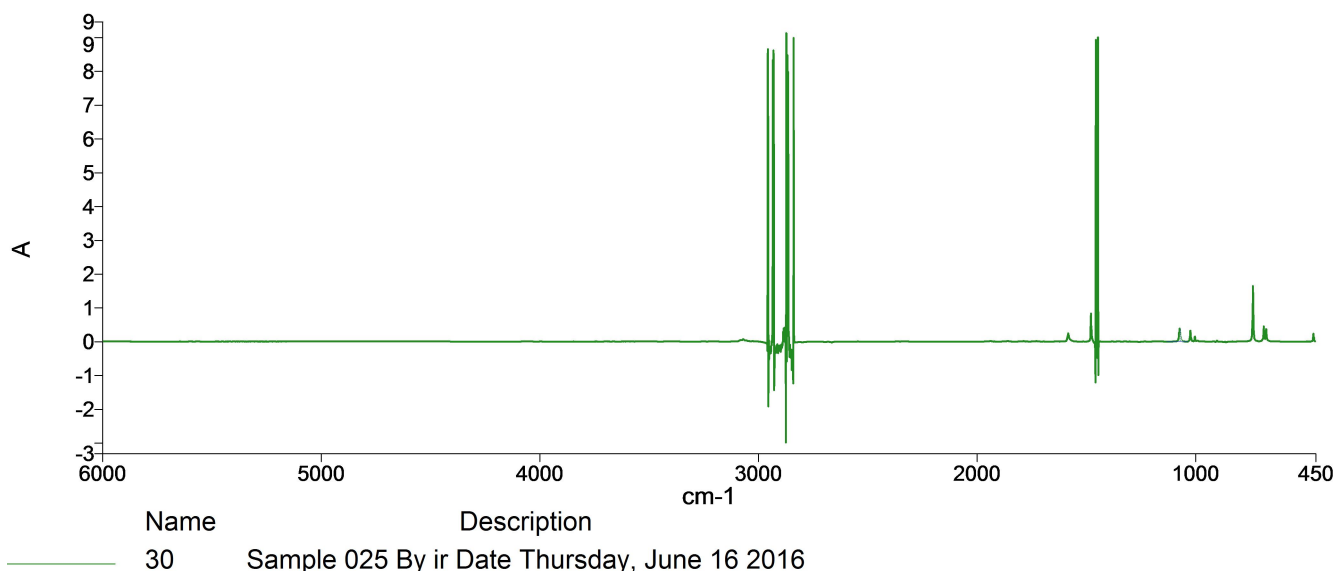


Name	Description
— 10	Sample 021 By ir Date Thursday, June 16 2016
— 15	Sample 022 By ir Date Thursday, June 16 2016
— 20	Sample 023 By ir Date Thursday, June 16 2016
— 25	Sample 024 By ir Date Thursday, June 16 2016
— 30	Sample 025 By ir Date Thursday, June 16 2016

Summary

Sample Name	Description	Quality
10	Sample 021 By ir Date Thursday, June 16 2016	The Quality Checks give rise to multiple warnings for the sample.
15	Sample 022 By ir Date Thursday, June 16 2016	The Quality Checks give rise to multiple warnings for the sample.
20	Sample 023 By ir Date Thursday, June 16 2016	The Quality Checks give rise to multiple warnings for the sample.
25	Sample 024 By ir Date Thursday, June 16 2016	The Quality Checks give rise to multiple warnings for the sample.
30	Sample 025 By ir Date Thursday, June 16 2016	The Quality Checks give rise to multiple warnings for the sample.

Peak Table Spectrum



Peak Area/Height Results

Peak	X (cm-1)	Y (A)	Area (A)	Height (A)	Start	End	Base1	Base2
1	734.64	0.4244	2.02	0.4223	799.51	706.39	800.25	706.39

Peak	X (cm-1)	Y (A)	Area (A)	Height (A)	Start	End	Base1	Base2
1	734.64	0.6699	3.22	0.6666	799.51	706.39	798.64	706.34

Peak	X (cm-1)	Y (A)	Area (A)	Height (A)	Start	End	Base1	Base2
1	734.65	1.1154	5.38	1.1097	799.51	706.39	799.93	706.21

Peak	X (cm-1)	Y (A)	Area (A)	Height (A)	Start	End	Base1	Base2
1	734.65	1.2526	6.1	1.2409	799.51	706.39	798.64	706.49

Peak	X (cm-1)	Y (A)	Area (A)	Height (A)	Start	End	Base1	Base2
1	734.66	1.653	8.08	1.6445	799.51	706.39	798.64	706.55

Peak	X (cm-1)	Y (A)	Area (A)	Height (A)	Start	End	Base1	Base2
1	1070.96	0.0957	0.77	0.0957	1136.02	1034.29	1135.22	1034.29

Peak	X (cm-1)	Y (A)	Area (A)	Height (A)	Start	End	Base1	Base2
1	1070.95	0.1524	1.19	0.1521	1136.02	1034.29	1135.01	1034.52

Peak	X (cm-1)	Y (A)	Area (A)	Height (A)	Start	End	Base1	Base2
1	1070.92	0.2581	1.99	0.2574	1136.02	1034.29	1134.93	1034.54

Peak	X (cm-1)	Y (A)	Area (A)	Height (A)	Start	End	Base1	Base2
1	1070.92	0.2982	2.31	0.2939	1136.02	1034.29	1135.25	1034.54

Peak	X (cm-1)	Y (A)	Area (A)	Height (A)	Start	End	Base1	Base2
1	1070.9	0.3915	3.01	0.3908	1136.02	1034.29	1135.18	1034.54